

# WORKPLAN<sup>®</sup> Solutions

WorkPLAN is a fully-scalable family of manufacturing software solutions, which enables **custom manufacturers**, **project-based** and **make-to-order** companies and **job shops** to manage their business efficiently.

Available solutions include 'MyWorkPLAN' for project or **job management** and 'WorkPLAN Enterprise' for full enterprise resource planning (ERP) featuring some or all of the following functionality according to your requirements...

## Job Tracking

WorkPLAN manages your jobs or projects from start to finish.

When the customer accepts your quote, you can instantly convert it into a sales order in WorkPLAN's Jobtracker module, or quickly create a new sales order from scratch. You can also generate delivery notes and turn the order into a customer invoice in a few clicks.

The system automatically attaches all your documents to the job or project for easy retrieval.

With WorkPLAN, you can make intelligent decisions using real time technical and cost data and ensure your profitability for the long term

- Automatic job data management
- Simplified sales administration
- Real time tracking of activity and costs
- Document dematerialization

## Planning & Simulations

You can simulate your quotations in WorkPLAN's Scheduler module and provide your prospects or customers with realistic deadlines, taking into account the real capacity of your machines and/or employees. WorkPLAN enables you to carry out forward, backward and period simulations.

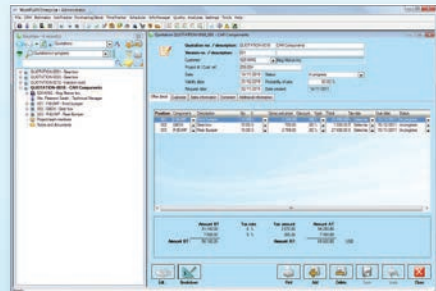
You can produce the order to schedule, taking into account order priorities and the availability of internal or outsourced resources.

WorkPLAN's GANTT chart enables you to optimize your production workload, reducing bottlenecks and controlling project milestones.

If required, you can even export/re-import your jobs to advanced planning systems (APS) such as Ortems or Preactor, and export calculated schedules to MS Excel, MS Project, or a 3rd party ERP system.

- Fast view and analysis of the workload
- Optimization of your resources
- Easy export to Microsoft and 3rd party systems
- Reliable interfaces and detailed planning

## Quotations



With WorkPLAN's 'Estimator' module, you can generate fast and precise cost calculations. If you wish, you can also make use of your MS Excel® spreadsheets or advanced CAD data generated by the WorkXPlore 3D high speed collaborative viewer.

Making full use of your expertise, historical data and technical criteria you can respond quickly to a RFQ with an accurate quotation and later modify, add or remove any element required by your prospects or customers...

... All or part of the quotation can be turned into a job at a click of a mouse, as soon as you receive the order.

- Timeliness, responsiveness, reliability and accuracy
- Data automation and centralization
- Comparative data for project reports
- Measurable profitability

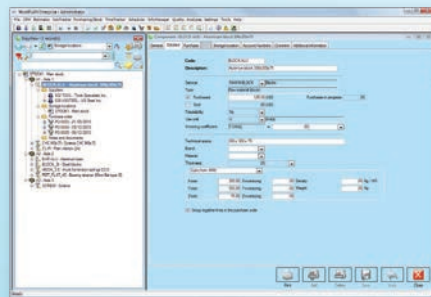


## Serial Production

The WorkPLAN Serial Production module provides functions for companies producing both tools and serial parts.

You can produce serial parts to order or to stock, register valid and scrapped quantities or weight, monitor assembly or task advancement and time remaining, based on quantities already produced.

With this module you can manage the entire tool life-cycle – from initial manufacture to maintenance and repair.



- Flexible production management
- Manage entire tool life-cycle

## Purchasing-Stock Management

In WorkPLAN you can automatically import bill of materials or create them using templates, and quickly transform your supply requirements into requests for quotes or purchase orders.

WorkPLAN's multi-stock management enables you to reserve materials, create delivery receipts, maintain minimum stock levels and manage traceability and inventories (barcodes, pocket PCs).

- Bill of materials import (a real time saver!)
- Simplified purchasing
- Automatic update of project reports
- Multi-stock management and traceability

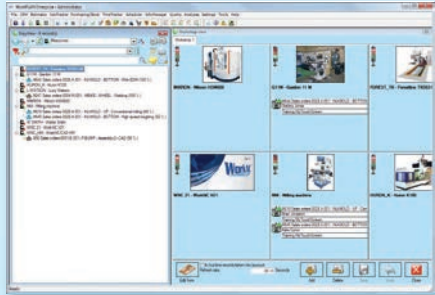
**SAP<sup>®</sup> Certified**  
Integration with SAP Applications

## Time Management

In WorkPLAN you can register times spent on your jobs in real time via manual input, barcodes and/or touch screens.

WorkPLAN's MyTimeManagement is an easy to use, all-in-one tool to manage staff attendance and task progress. Information on breaks, overtime and holidays can be passed into your payroll system.

Real time information on staff availability, machine capacities, subcontractor status, remaining times, etc... is always at your fingertips. A workshop view screen shows in real time what task is performed on each machine or by employee.



- Flexibility and real time follow-up
- Real time view and control of the workshop
- Resource information in real time
- Direct interface to payroll systems

## Quality Management

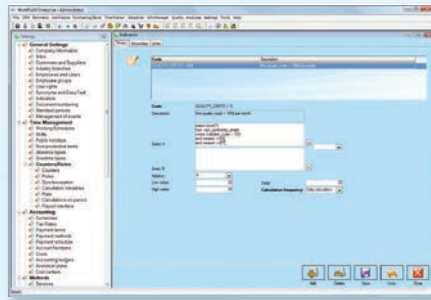
The WorkPLAN quality module enables you to register time and costs due to non quality, manage non-conformity sheets, causes, corrective actions and special acceptance requests, and meet ISO requirements.

It helps you to evaluate suppliers and cross-functional product quality enabling continuous improvement.

In this module you can manage the maintenance of measuring devices and centralize and distribute quality-related documents (quality manuals, standards, etc.).

- Non-quality cost calculation and analysis
- Supplier evaluation and rating
- Functions enabling the continuous improvement of activity
- Quality certification support tools

## Performance Management



WorkPLAN allows you to understand and control your business performance in real time. You can define a customized list of "Key Performance Indicators" and monitor the performance of a range of variables, e.g. number of quotations sent over a period, machine utilization rates, or employee absenteeism.

Cashflow is the lifeblood of any company and WorkPLAN can provide you with visibility of your cash levels over the weeks ahead.

With WorkPLAN job summaries, complete technical and financial data for each job or project are available in real time as the job moves through the production process.

- Real time key performance indicators
- Optimized cash flow forecast
- Supplier and sub-contractor performance tracking
- Personalized report generator

## Information Management

WorkPLAN's Infomanager stores all information, documents and data together within the integrated file management system that automatically creates a structure of default folders and files for each of your quotes or jobs.

The WorkPLAN 'EasyView' central tree-like information structure allows you to sort your data according to your needs and the easy-to-use filtering tool allows you to quickly sort, filter and find the information you need.

Data visibility is controlled by user access rights and you can manage multiple company sites using the same database.

- Documents stored together in one place
- Track and record all project or job modifications
- Fast retrieval of all information related to past projects or jobs
- Information can be viewed by the right people at the right time

## CRM

The WorkPLAN Customer Relationship Management (CRM) module allows you to manage sales opportunities, prospects, contacts, quotations and sales orders. You can easily create, test and run personalized email and mail campaigns.

Opportunities can be turned into quotations and sales orders at a click of a mouse.

WorkPLAN manages lists of actions taken or scheduled for each opportunity, sends reminders to the sales persons and enables scheduled events to be exported to external calendars.


This module also includes a useful "timeline" feature to view documents linked to a project/customer over a period of time.

Analysis screens allow you to monitor your results by industry, territory, sales person, period, etc.

- Optimize customer relationships
- Easy communication tools
- Fast, summarized opportunity reports
- Responsiveness due to automatic alerts

Follow us on

 [Twitter/sescoi](https://twitter.com/sescoi)

 [www.facebook.com/erp.mto](https://www.facebook.com/erp.mto)



**WORKPLAN**<sup>®</sup>  
Solutions